



# EMpower v2.9

## Installation manual

### Table of contents

<b>Requirement .....</b>	<b>1</b>
<b>For installing and running EMpower: .....</b>	<b>1</b>
<b>Mac .....</b>	<b>3</b>
<b>Troubleshooting .....</b>	<b>3</b>
<b>Windows / Linux .....</b>	<b>4</b>
<b>Start the Installation.....</b>	<b>6</b>
<b>Start EMpower .....</b>	<b>7</b>

## Minimum requirements for installing and running EMapower:

	Recommended
<b>CPU</b>	64-bit Intel i7 equivalent or Apple Silicon
<b>RAM</b>	16 GB+
<b>Screen Resolution</b>	1920 x 1080
<b>Installation disk space</b>	200MB
<b>Data disk space</b>	50GB +(depends on the survey)
<b>Internet Connection</b>	Required to authenticate license code
<b>SD Card reader</b>	USB 3.0 (or equivalent speed) for data transfer
<b>Monitor Size</b>	13" +

### Windows

Versions tested:

- Windows 10, 64-bit
- Windows 11, 64-bit
- Note: Windows 10S or 11S are **not** supported

Permissions required: Must be logged in as Administrator

### Linux

Versions tested:

- Ubuntu 18.04, 64 bit
- Ubuntu 20.04.4, 64 bit

Permissions required: Standard user

### Mac

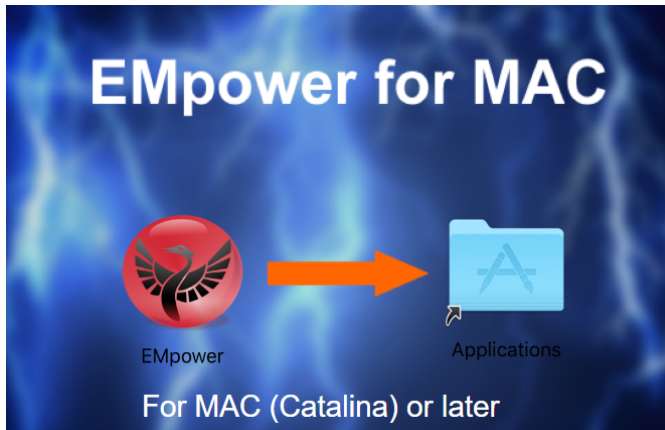
OS versions tested:

- 10.15.4, "Catalina" 64 bit
- 12.0, "Monterey" 64-bit (Apple silicon), Rosetta installed

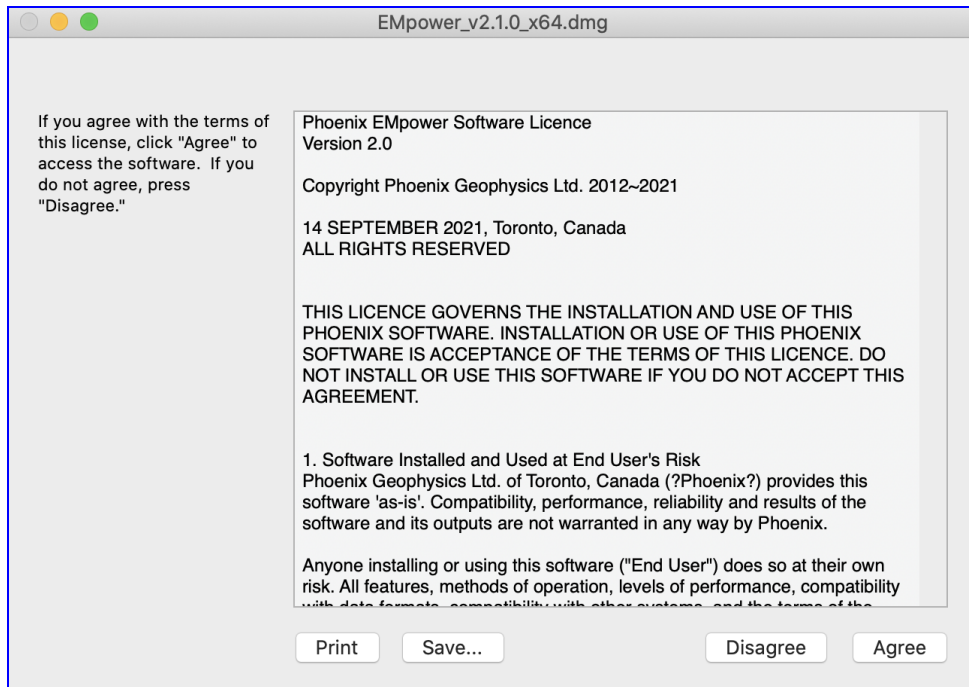
Permissions required: Standard user account

## Mac

1. Drag and drop the installer onto the Applications folder to begin the installation.



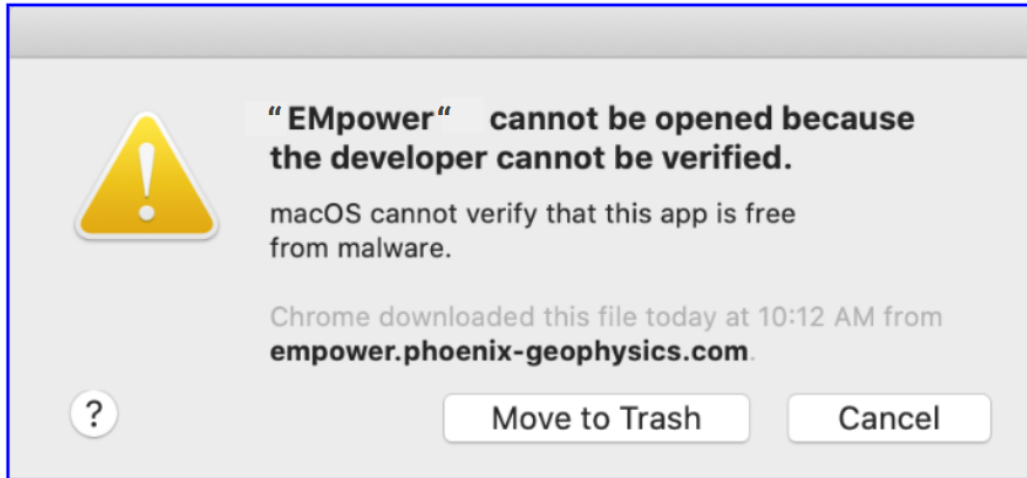
2. Read the EMpower License Agreement



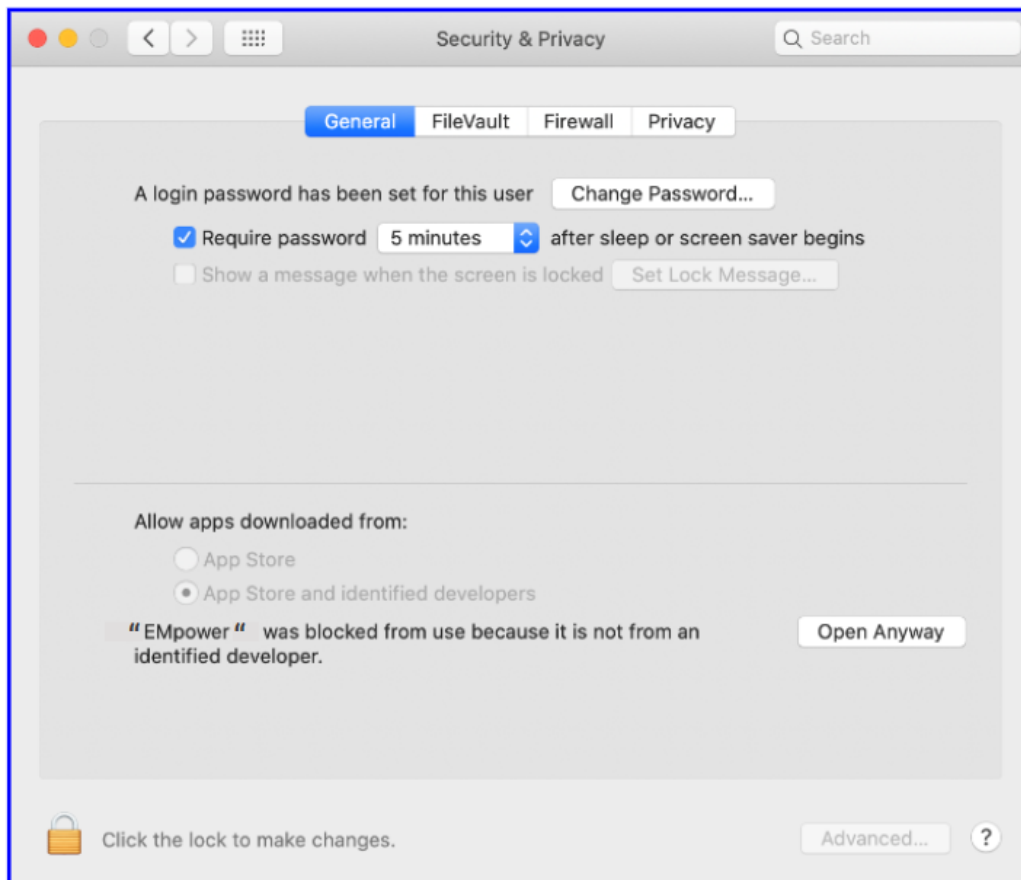
- If you agree with the terms of the EMpower license agreement, then click the **Agree** button

## Troubleshooting

1. Mac OS default security settings block installing EMPower because Phoenix is not a registered developer



- 1.1. To continue the installation, go to macOS System Preferences / Security & Privacy and click on **Open Anyway**

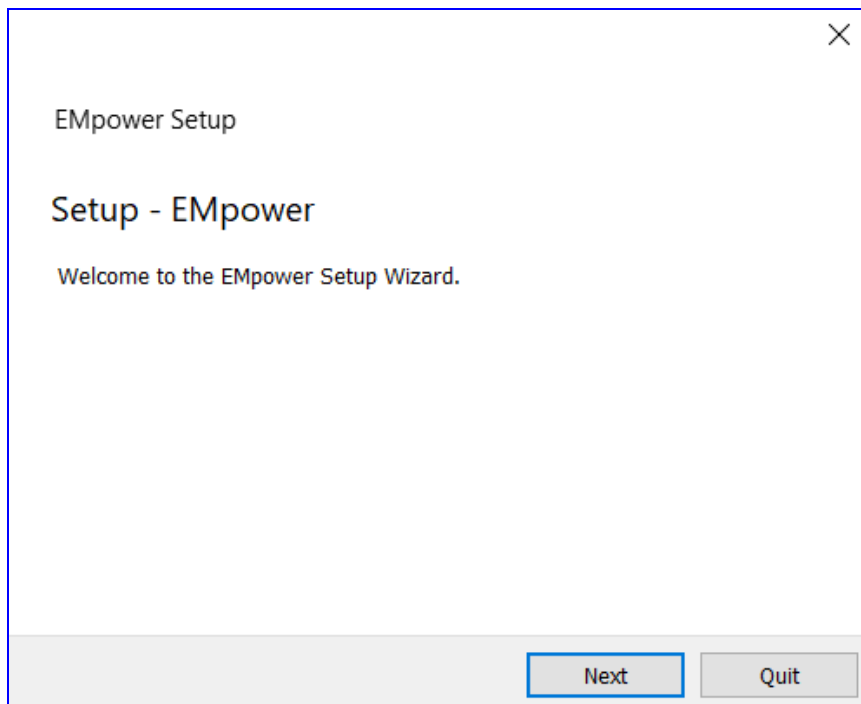


## Windows / Linux

1. EMpower Setup Wizard by double clicking on the Empower installation executable file. This file will look similar to the example shown below.

**Windows:** EMpower\_v2.###\_x86\_amd64.exe

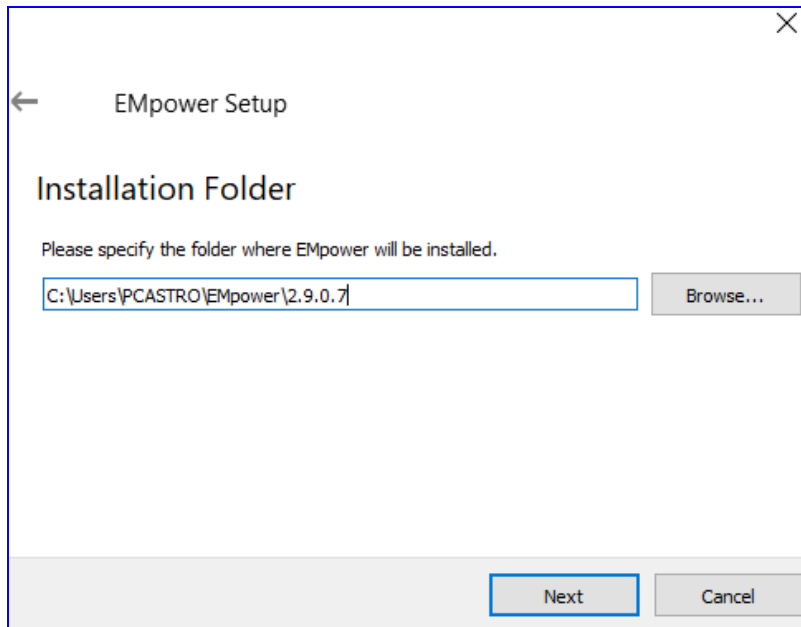
**Linux:** EMpower\_v2.###\_x\_x64.run



- Click Next

## 2. Installation Folder

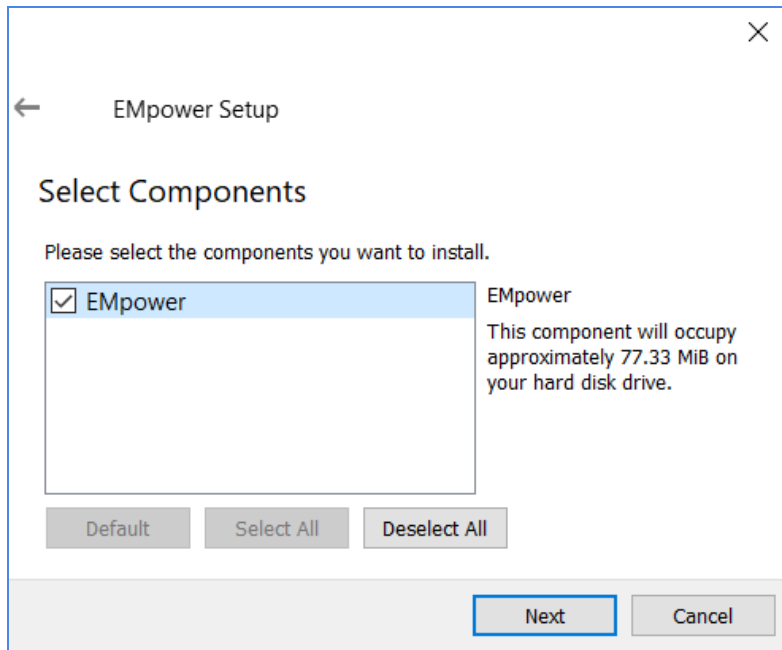
- Use the default directory from the installer, or press Browse to select a different directory



- Click Next

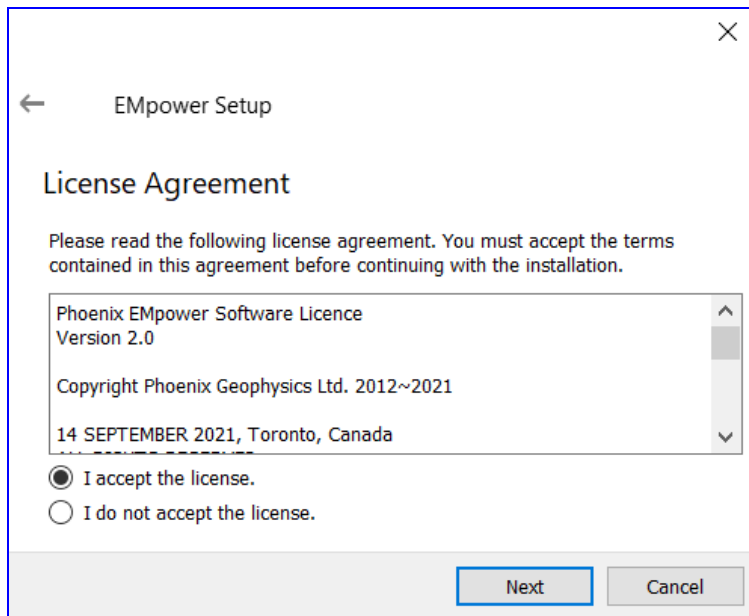
### 3. Hard drive memory space required

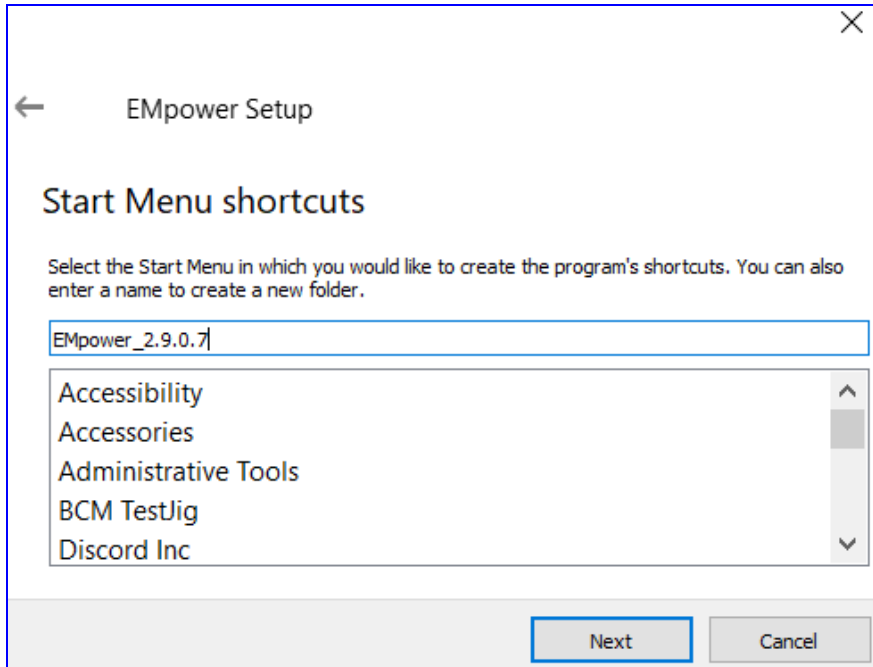
- Review the memory space requirement
- Click Next



### 4. Read the EMpower License Agreement.

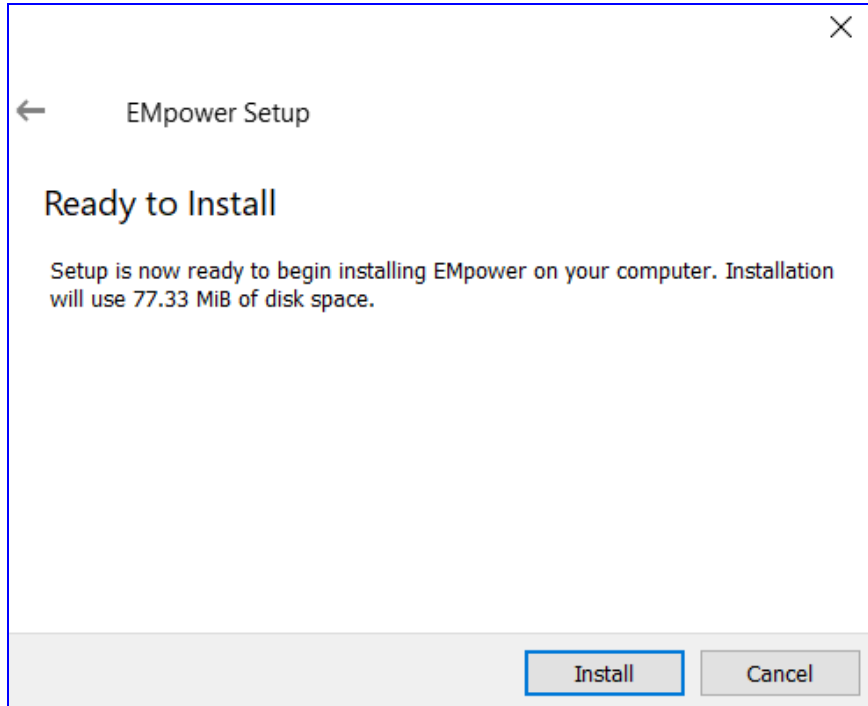
- If you agree with the terms select “I accept the license“ option
- Click **Next** button





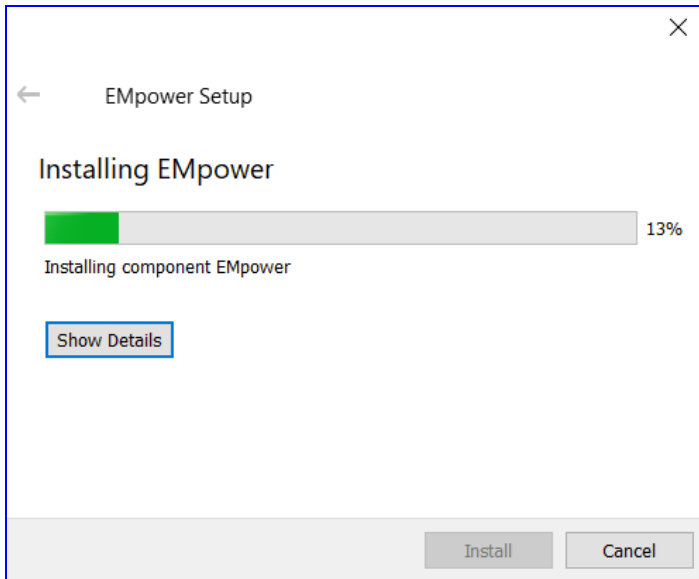
## 5. Start the Installation

- Click the **Install** button to begin the installation

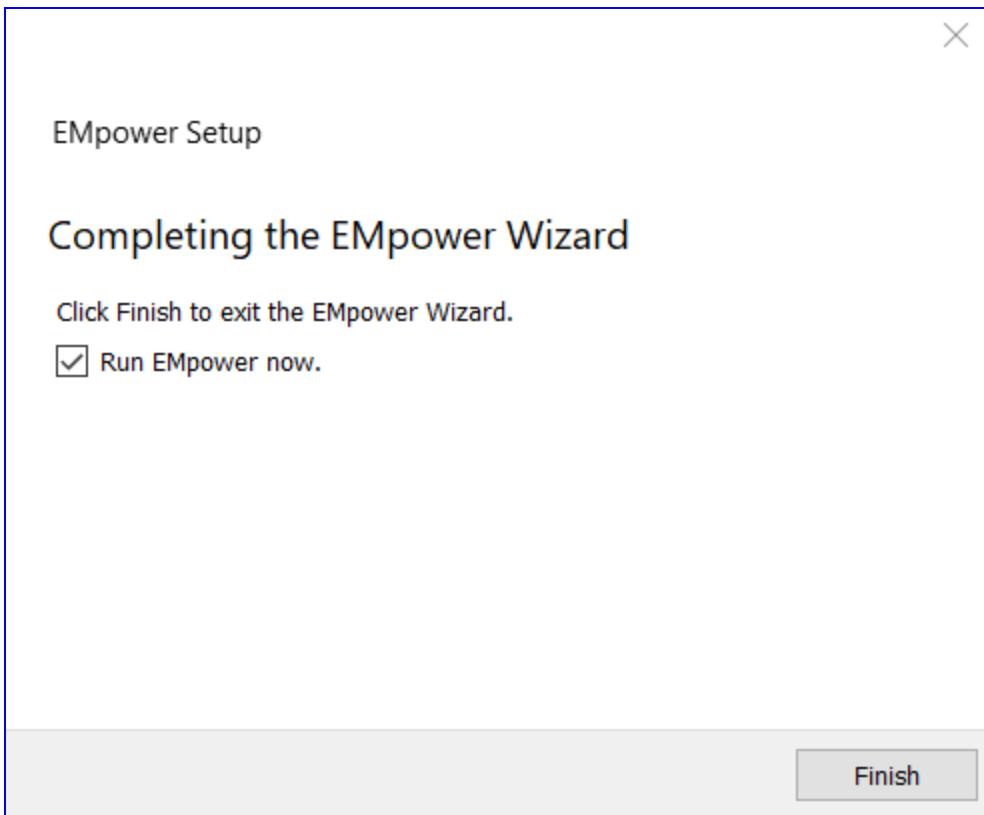


*The windows installer does not have a back button.*



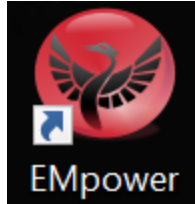


6. Click the **Finish** button to complete the EMpower installation

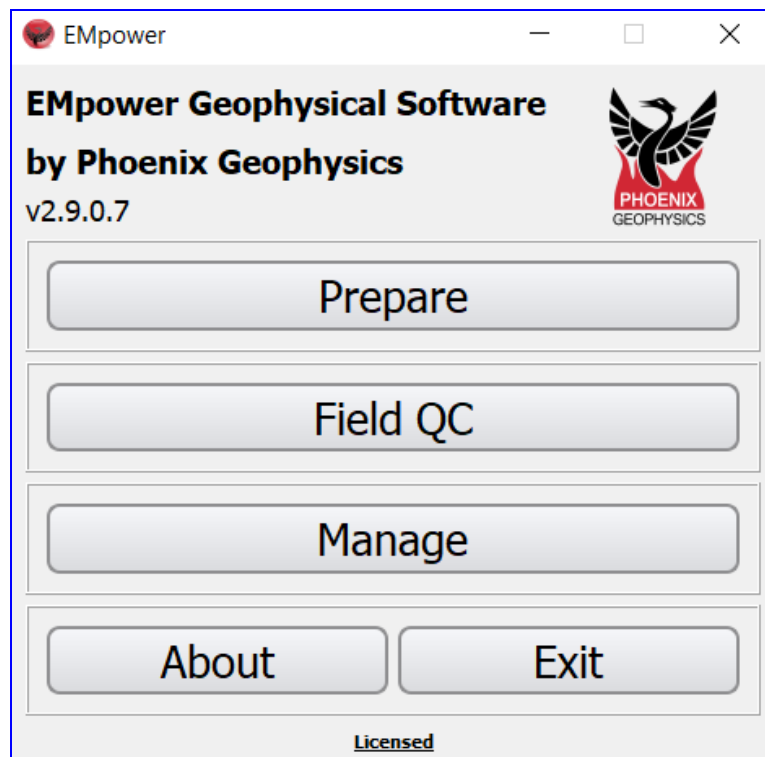


## Start EMpower

1. Click the **EMpower** shortcut icon (Windows / Mac)



- In Linux, run the empower.sh script in the EMpower installation directory
2. The Text “Unlicensed” will appear at the bottom of the **EMpower** application window
    - The **Prepare** module can be used without license



3. The Manage module can only be used activating the EMpower license, (see EMpower - License activation document)



Please check out the [FAQs](https://phoenixgeophysics.freshdesk.com/) (<https://phoenixgeophysics.freshdesk.com/>)  
Or email us at: [support@phoenix-geophysics.com](mailto:support@phoenix-geophysics.com)